

## Work Incentives Planning and Assistance (WIPA)

The PABSS program works in collaboration with the Work Incentives Planning and Assistance (WIPA) Program in Arkansas. WIPAS can help you determine how work affect your benefits, assist planning your return to work effort, provide support and counseling services. Below is a WIPA directory. You can reach the state administrator to contact the nearest benefits specialist in your area.

### State Administrator:

#### Jerry Clawson

1918 N. Birch Avenue

Fayetteville, AR 72703

(479) 442-5600 / (479) 442-1391 TTY

[www.sources.org/awin.html](http://www.sources.org/awin.html)

*This brochure was made possible by funding support from the U.S. Social Security Administration (SSA). SSA has reviewed this publication for technical accuracy only; however, this should not be considered an official SSA document.*



## DISABILITY RIGHTS CENTER

*The Protection & Advocacy (P&A) System*

### Disability Rights Center

1100 North University Avenue

Suite 201

Little Rock, AR 72207

Phone: (501) 296-1775 or

(800) 482-1174 v/tty

Fax: (501) 296-1779

[panda@arkdisabilityrights.org](mailto:panda@arkdisabilityrights.org)

[www.arkdisabilityrights.org](http://www.arkdisabilityrights.org)

## Protection and Advocacy for Beneficiaries of Social Security (PABSS)



## DISABILITY RIGHTS CENTER

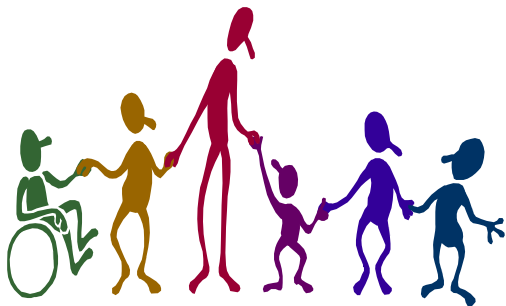
*The Protection & Advocacy (P&A) System*

**(800) 482-1174(V/TTY)**

## PROTECTION AND ADVOCACY FOR BENEFICIARIES OF SOCIAL SECURITY (PABSS)

### The PABSS program assists people with disabilities who:

- receive SSI or SSDI benefits
- have “return to work” issues
- are experiencing problems with SSDI/SSI benefits while returning to work
- need workplace accommodations
- have complaints about service providers
- are experiencing workplace discrimination.



### PABSS staff provides:

#### Advocacy:

PABSS advocates on behalf of Social Security beneficiaries who want to return to work. We help you maintain and/or obtain employment, Vocational Rehabilitation services, community supports and services you need to return to work.

#### Information and Referral:

PABSS provides information and referral to community service providers, employers, beneficiaries, families and disability support groups.

#### Technical Support:

PABSS assists beneficiaries, employers and community service agencies on the Americans with Disabilities Act (ADA), workplace accommodations and disability-related issues.

#### Education:

PABSS provides training to individuals and groups on “return to work”, Medicaid and Medicare supports and the Ticket to Work and Work Incentives Improvement Act of 1999.

#### Legal Support Services:

PABSS reviews, investigates mediates, litigates and assists beneficiaries resolve complaints about inadequate or inappropriate services through employment service providers, community support providers and employers.

### Who is eligible for PABSS?

Beneficiaries within the state who are receiving Social Security Disability Benefits (SSDI), or Supplemental Security Income Benefits (SSI) based on disability or blindness.

*Disability Rights Center (DRC) is the Protection and Advocacy System for people with disabilities in the state of Arkansas. Protection and Advocacy for Beneficiaries of Social Security (PABSS) is authorized under Section 1150 of the Social Security Act, as added by Section 122 of P.L. 106-170, the Ticket To Work And Work Incentives Improvement Act of 1999. This brochure was made possible by funding support from the U.S. Social Security Administration (SSA). SSA has reviewed the brochure for technical accuracy; however, this should not be considered an official SSA document.*



**Disability Rights Center**  
1100 N. University, Suite 201  
Little Rock, AR 72207

**Phone: 501-296-1775/1-800-482-1174**  
(TTY/Voice)

**Fax: 501-296-1779**

**panda@arkdisabilityrights.org**  
**www.arkdisabilityrights.org**